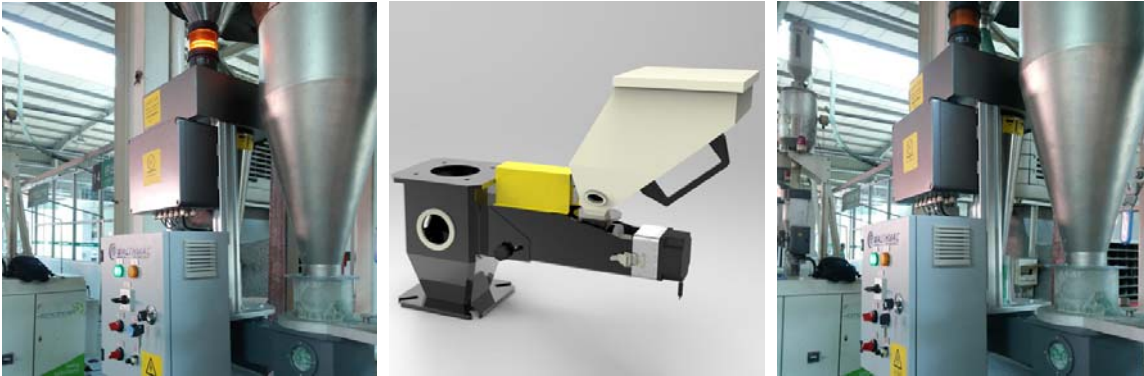


## GD-3 Weight-loss Side Feeder

(Accessory Adding Machine, Masterbatch Machine)



### Application Field

Plastic films/Cables/pipes/production of materials/plastics modification and other industrials, such as Chemicals.

### System Principle

Based on weight-loss principle, the feeding screw pushes the raw material within high precision dynamically as set value. Plastic accessories can be scaled-down or up to be coordinate with variation of main raw material, system is derived by servo motor and controlled by closed-loop. The algorithm of dynamically correcting error is adopted to improve the feeding precision for all kinds shape and performance material.

### Scope of Application

For high precision scaled dosing of accessories (such as masterbatch, powder and auxiliaries)

### Function Features

1. High precision weight-loss metering system
2. Fast response speed and closed-loop controlled servo system.
3. Screw feeding
4. For different kind of raw materials
5. Self-adapting proportioning control; self-correcting feeding error; with error less than  $\pm 0.5\%$
6. More reliable operation with underlying hardware and software control
7. Optional standard adapters

### Optional Models &Parameters

On the premise of specific component quantity and measuring method of WalthMac, the actual output relate with raw material and component quantity.

Model	Output	Size
GD-1	0. 8-228	650*200*500
GD-2	1. 4-432	750*300*550



GD-3	1. 8-532	800*400*600
------	----------	-------------